

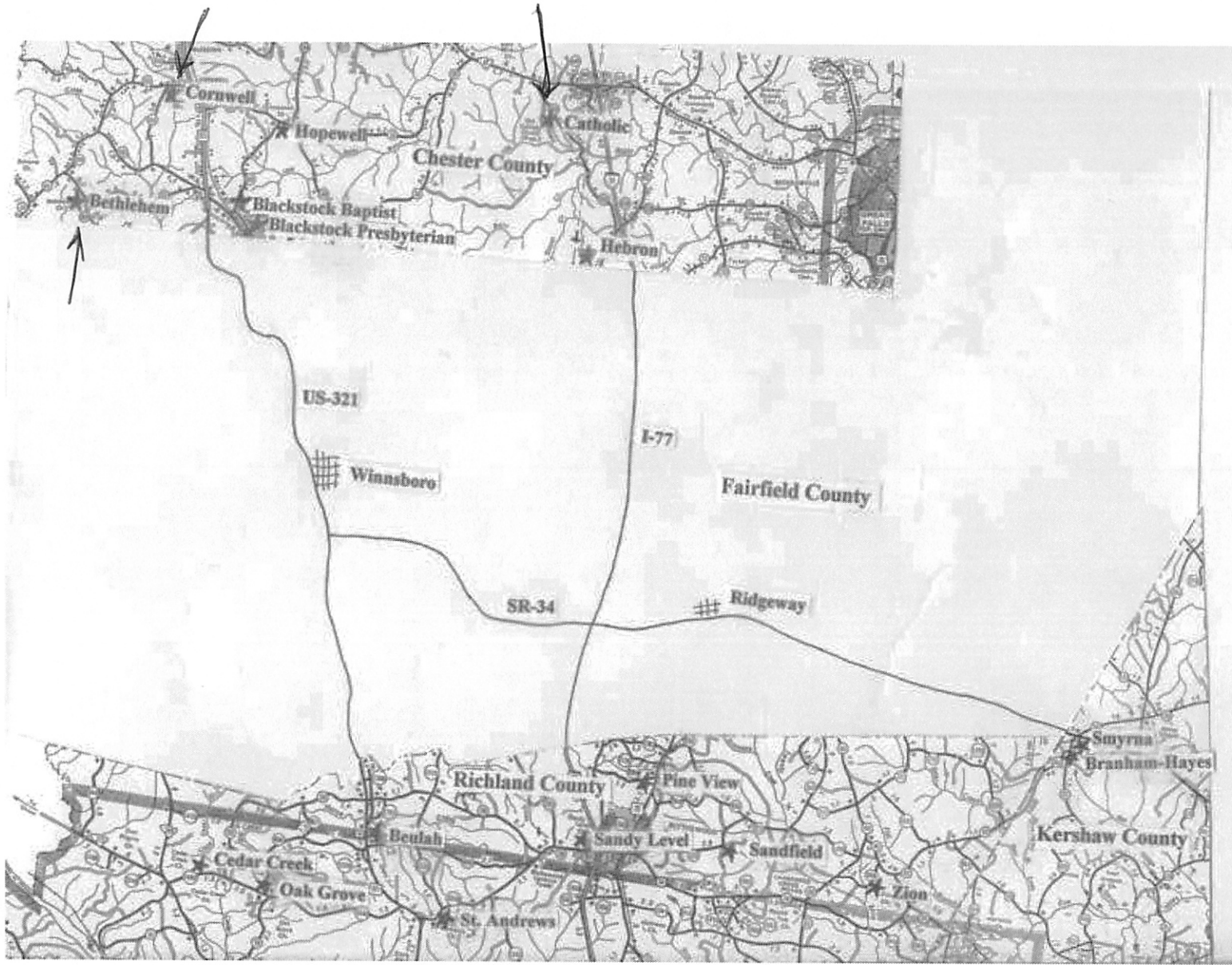
FAIRFIELD COUNTY CEMETERIES

VOLUME IV

(Cemeteries in Adjacent Counties)



→ **CATHOLIC PRESBYTERIAN CHURCH**





→ **Bethlehem Methodist Church Cemetery**

This Cemetery is located in Chester County on State Road 43 about 2.6 miles west of US 321.

Ashley, Laura Matthews
June 26, 1922 – May 24, 2001

Barnes, Belle Hare
October 7, 1879 – October 29, 1974

Barnes, Joseph M.
June 30, 1853 – May 11, 1917

Barrs, Jessie Cameron
January 23, 1913 – February 15, 1996

Beam, Albert F., Jr.
December 25, 1935 – February 14, 1988
BT2, US Navy, Korea

Beam, Albert Franklin
May 12, 1901 – February 25, 1957

Beam, Betty Wylie
April 1, 1917 – July 4, 1917
Daughter of J. F. & Janie Beam

Beam, Elijah
February 20, 1848 – February 27, 1924
Co. E, 3rd Bat., S. C. V., CSA

Beam, Emma
August 26, 1838 – March 22, 1909
Wife of Elijah Beam

Beam, Hugh David
April 8, 1903 – September 29, 1919
Son of J. F. & Janie Beam

Beam, Infant Daughter
April 20, 1907 – April 24, 1907
Daughter of S. E. & M. W. Beam

Beam, Infant Son
March 24, 1908 – March 24, 1908
Son of S. E. & M. W. Beam

Beam, Janie Craft
March 23, 1876 – February 17, 1920
Wife of J. F. Beam

Beam, Jesse F.
August 26, 1877 – November 10, 1961

Beam, Jessie
Died August 4, 1895
Aged about 72 years

Farmer, Regina Roberts
December 26, 1855 –
Wife of R. M. Farmer

Farmer, Robert M.
September 15, 1851 – July 9, 1913

Farmer, Sophie Shirley
July 22, 1867 – June 1, 1940

Ferrell, Ambrose
October 29, 1935 – July 8, 2001

Ferrell, Arthur
October 7, 1903 – March 27, 1971

Ferrell, Beatrice
April 5, 1905 – October 20, 1982

Ferrell, Calvin
May 11, 1938 – April 24, 1968



Ferrell, Ella B. Grant
Died December 20, 1960

Ferrell, James
June 12, 1880 – July 2, 1960
PVT, Co. D, 1st Regt., S. C. Inf.
Spanish American War

Hair, David
April 6, 1843 – May 1, 1942

Hair, John H.
August 28, 1850 – January 29, 1937

Hair, Mary Ann
July 16, 1846 – April 5, 1933

Hair, Pernecia A.
April 25, 1856 – September 30, 1942

Hare, Maggie
July 12, 1888 – August 31, 1968

Holley, Turner W.
Died October 4, 1864
Died in Charleston of Typhoid Fever
Aged 44 years

Hoover, George F.
1887 – 1959

Hoover, Maggie H.
1884 – 1966

Hudson, James H.
March 10, 1845 – September 18, 1924

Hudson, Marion
No Dates

Hudson, Minnie Lee
March 11, 1903 – October 5, 1920
Daughter of James H. Hudson

Johnson, Willie Irene McKeown
March 1, 1920 – January 19, 1939
Wife of Earl E. Johnson

Keisler, Lillian Lee
March 16, 1941 – February 9, 1986

Keziah, Mary Lewis
May 24, 1903 – October 27, 1977
Wife of John W. Keziah

Lee, Callie McKeown
October 8, 1912 – June 19, 1969

Lee, George E.
August 8, 1908 – April 17, 1960

Lewis, Amanda Nicole
March 12, 1979

Lewis, Catharine Wells
March 25, 1798 – November 25, 1880
Wife of William B. Lewis

Lewis, E. G.
May 22, 1819 – March 25, 1876
Wife of W. W. Lewis

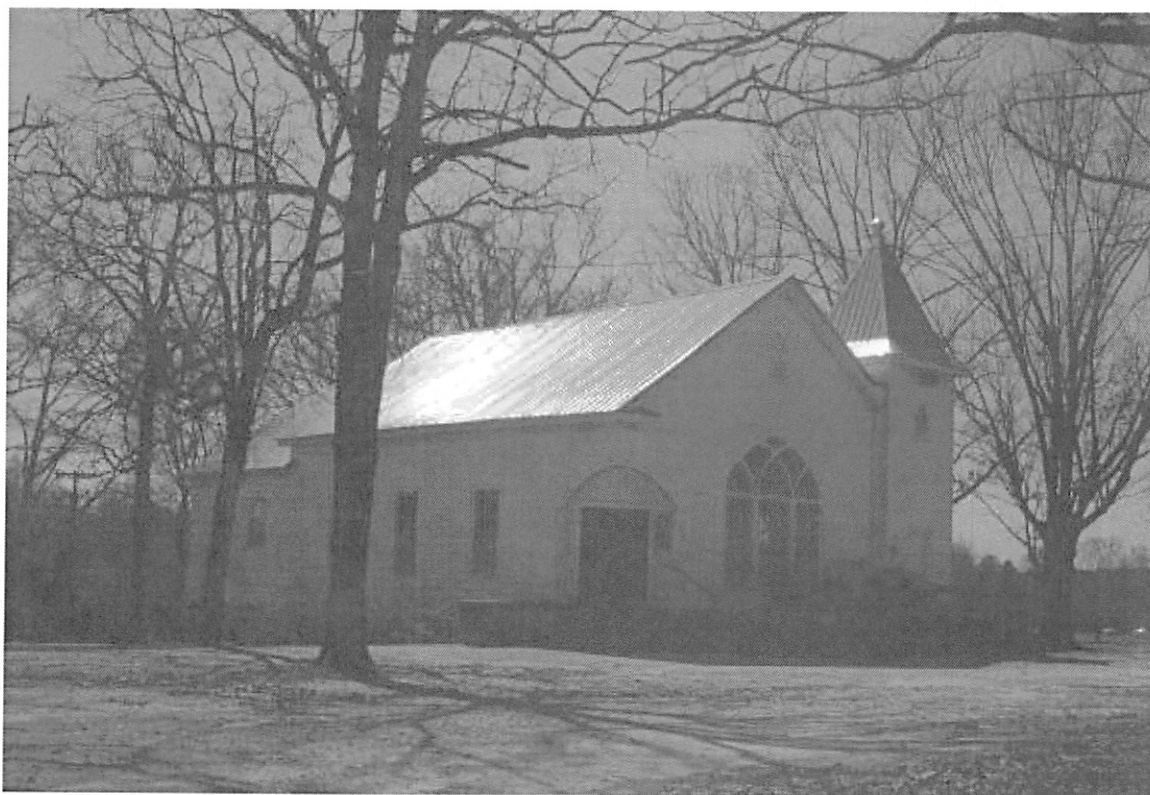
Lewis, Edward Douglas
February 14, 1933 – March 20, 1987

Lewis, Edward E.
September 16, 1899 – December 25, 1945
Son of Edward J. Lewis

Lewis, Edward J.
November 22, 1875 – July 21, 1937

Lewis, Eliza Spence
December 11, 1916 – July 17, 1996

Lewis, Elizabeth
August 22, 1901 – January 10, 1920
Daughter of E. J. & Georgie R. Lewis



→ **Cornwell Presbyterian Church**

This Cemetery is located in Chester County on State Road 205, about half a mile off of US 321.

Binkley, Alexandra Marie
November 8, 2002 – November 29, 2002

Binkley, William Warren
March 19, 1947 – August 3, 1998
Major, US Army, Vietnam

Boney, Betty S.
1906 – 1999

Boney, John W.
1907 – 1992

Boney, William Addison
September 6, 1910 – January 7, 2002

Byrd, Jesse S.
July 10, 1898 – April 8, 1974

Byrd, Margaret C.
May 27, 1906 – August 18, 1989

Cassels, Sarah Taylor
September 26, 1924 –

Castles, Fornie Pearl
July 29, 1898 – July 15, 1976

Castles, Ruth Grady
August 20, 1901 – August 4, 1992

Cornwell, John Edward, Jr.
September 12, 1899 – January 19, 1970

Cornwell, Martha Woodruff
July 10, 1895 – June 4, 1987

DeLancey, Clifford Thomas
February 12, 1916 – April 24, 1972
Connecticut, 2nd Lieutenant, US Army
World War II

DeLancey, Laura Alice
May 9, 1922 –

→ Faust, Annie Mae Grant
December 28, 1896 – July 26, 1977
Wife of H. G. Faust, Sr.

Faust, Grace Love
December 11, 1924 – March 6, 2004

Entzminger

Artimesia D., 101
Catherine Irene, 102
Clifton E., 102
Colie H., 102
Dochia N., 102
Doris M., 102
Eliza R., 102
Emil E., 102
Emma Frances, 102
Estell D., 102
Ethel E., 102
Fannie, 102
Floyd L., 102
Frank K., 102
Frank Kee, 102
Frederic W., 102
Gabriele M., 102
George, 102
George F., 102
Harriet E., 102
Harriet Isabel, 102
Hattie Price Sligh, 102
Herbert, 102
J. W., 102
J. Winfield, 102
James C., 102
James F., 102
John A., 102
John W., 102
Katherine I., 102
Louise Hearst, 102
Lula P., 102
Luther M., 102
Mary B., 102
Minnie, 102
Rebecca A., 102
Robert Sanders, 102
Sara E., 103
Susie E., 103
T. F., 103
W. E., 103
Whatly L., 103
Wilburn L., 103
Willie W., 103
Wm. W., 103

Ervin

Charles, 62
Nancy, 62

Erwin

Emma Jane, 30
Mary J., 30
Willie, 30

Estes

Craig Manning, 62
Ella Dove, 62

F

L., 92

Fagan

Addie Walker, 126
Betty Jean, 126
Wade Hampton, 126
Wilburn, 126

Faris

Gary Leon, 12

Farmer

Elizabeth M., 85
Infant Son, 2
James W., 85
Regina Roberts, 3
Robert M., 3
Sophie Shirley, 3

Farr

Infant Daughter, 62
Pauline Foreman, 62
Vance Milford, 63

Faust

→ Annie Mae Grant, 45
Emma, 92
George, 92
Grace Love, 45
H. L., 92
Hilton G., 46
Hilton Glenn, Sr., 46
I. A., 92
J. C., 103
Joseph A., 103
Lila G., 103
Mamie Flaherty, 103
Robert Glenn, 46
S. E., 92
S. T., 92

Ferguson

Alma P., 126
Isabella, 30
James, 30
Jones, 30
Mary, 30
Rachel, 30
Samuel, 30
William L., 126

Ferrell

Ambrose, 3
Arthur, 3
Beatrice, 3
Calvin, 3
Ella B. Grant, 3
James, 3

Finch

Edwin May, 17

Finley

Alton, 103
Alvin B., 103